

600mm & 900mm Slideout Rangehoods

Ducted or Front- re-circulating models

DUCTED MODELS:

(40mm high front panel)

RS6S - 600mm, s/steel

RS6W - 600mm, white

RS9S - 900mm, s/steel

RS9W - 900mm, white

FRONT RE-CIRCULATING MODELS:

(80mm high front fascia panel)

RSFR8S - 600mm, s/steel

RSFR8W - 600mm, white

RSFR9S - 900mm, s/steel

 **HOME APPLIANCES**

distributors of **Euromaid**  **IAG** 

INSTALLATION AND OPERATION MANUAL

CONTENT

- 1.....GENERAL
- 2.....SAFETY PRECAUTION
- 3..... WARNING!!
- 4.....INSTALLATION INSTRUCTIONS
- 5..... ATTENTION
- 6.....OPERATION
- 7.....USE AND MAINTENANCE
- 8SPECIFICATION

1. GENERAL

- A) Carefully read the following important information regarding installation safety and maintenance. Keep this information booklet accessible for further consultations.
- B) The appliance has been designed as a exhausting version (external exhaust) or as a filter version (inter air recycle) cooker hood.

2. SAFETY PRECAUTION

- A) Take care when the cooker hood is operating simultaneously with an open fireplace or burner that depend on the air from the environment and are supplied by other than electrical energy, as the cooker hood removes the air from the environment which a burner or fireplace need for combustion.
- B) The negative pressure in the environment must not exceed 4 Pa (4*10⁻⁵ bar).
- C) Provide adequate ventilation in the environment for a safe operation for the cooker hood.
- D) Follow the local laws applicable for external air evacuation
- E) Appliance shall only be used with rated voltage and frequency.
- F) There is a fire risk if cleaning is not carried out in accordance with the instruction.

3. WARNING!!

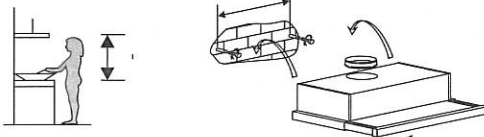
In certain circumstances electrical appliances may be a danger hazard.

- A) Do not check the status of the filters while the cooker hood is operating.
- B) Do not touch the light bulbs after appliance use.
- C) Do not disconnect the appliance with wet hands and without to force the supply cord..
- D) Flame cooking is prohibited underneath cooker hood.
- E) Avoid free flame, as it is damaging for the filters and a fire hazard.
- F) Constantly check food frying to avoid that the overheated oil may become a fire hazard .
- G) Disconnect the electrical plug prior to any maintenance.
- H) Children don't recognize the risks of electrical appliance. Therefore use or keep the appliance only under supervision of adults and out of the reach from children.

4. INSTALLATION INSTRUCTIONS

Way one:

- 4.1 The cooker hoods should be placed at a distance of 65-75cm from the cooking surface for best effect.
- 4.2 To install onto the wall drill 2 holes of Ø8mm on a suitable place according with the centre distance of hole in the back of the cooker hood.
- 4.3 Insert the nut into the holes.
- 4.4 Insert the screws into the nuts and tight.
- 4.5 Put up the cooker hood onto the tighten screws.



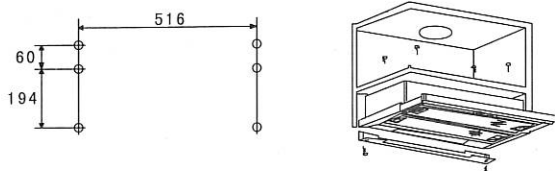
4.6 Put the one way valve onto the cooker hood.

Way two:

4.1 Drill 6 holes of 4mm diameter at the bottom of the hanging cupboard

4.2 Put the one way valve on the cooker hood, then install the cooker hood on the bottom of the cupboard, tighten the hood with enclosed 6 screws.

4.3 Install the adjusted board on the bottom of the hood in order to keep out the gap between hood back and cupboard.

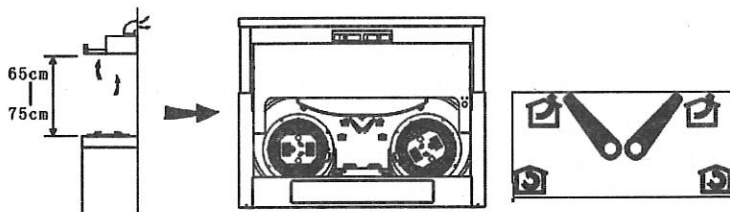


5. **ATTENTION:** should the lamps not work, make sure they are well tightened

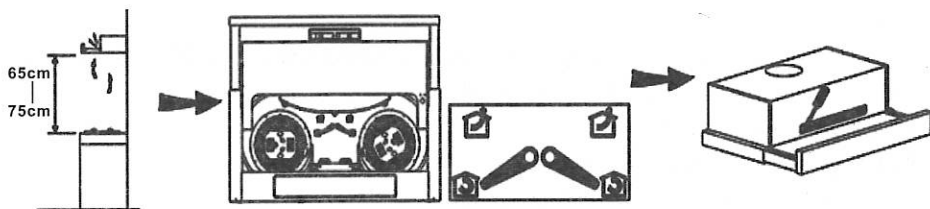
6. OPERATION

6.1 Connect the plug into the power.

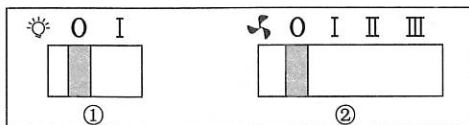
6.2 Choose the ducting mode or the recirculation mode as you need (for Front-circulating models only) :



ducting mode



recirculation mode



6.3 Push the switch ① into “I”, the lamp be on; push into “0”, the lamp be off.

6.4 Push the switch ② into “I、II、III”, the motor will be on “low、mid、high” three speeds, push into “0”, the motor will be off.

7. USE AND MAINTENANCE

It is recommended to operate the appliance prior to cooking.

It is recommended to leave the appliance in operation for 15 minutes after cooking is terminated in order to completely eliminate cooking vapours and odours.

If the appliance is not used, please turn off.

Don't use or stop use if the appliance is damaged especially the supply cord and the case.

If the supply cord is damaged, it must be replaced by the manufacturer, its service agent or similarly qualified persons in order to avoid a hazard.

Don't immerse the appliance in liquid.

The exhaust air must not be discharge into a flue which is used for exhausting fumes from appliance burning gas or other fuels.

Regulations concerning the discharge of air have to be fulfilled.

The proper function of the cooker hood is conditioned by the regularity of the maintenance operations, in particular, the active carbon filter.

The anti-grease filters capture the grease particles suspended in the air, and are therefore subject to clogging according to the frequency of the use of the appliance.

In order to prevent fire hazard, it is recommendable to clean the filter at a maximum of 2 months by carrying out the followings:

- Remove the filters from the cooker hood and wash them in a solution of water and neutral liquid detergent, leaving to soak.

- Rinse thoroughly with warm water and leave to dry.

- The filters may also be washed in the dishwasher.

The aluminum panels may alter in color after several washes. This is not cause for customer complaint nor replacement of panels.

Clean the fan and other surface of the cooker hood regularly using cloth moistened with denatured alcohol of non abrasive liquid detergent.

Before any repair on the cooker hood, detach all plugs.

Replace filters approximately every 4 months.

8. SPECIFICATION

Voltage	220V-240V~/50Hz
Rotation method	Twin Motors, Twin Fans
Rated motor input power	100W+100W
Illumination	≤ 40W+40W(halogen light)
Rated input power	280W
Airflow	400m ³ /hr
Noise	≤ 68dBA
Outlet diameter	120mm

PRODUCT SERVICE NUMBER

1800 805 300

WEB - customersupport@hapl.com.au

 **HOME APPLIANCES**

distributors of **Euromaid**  **IAG** 